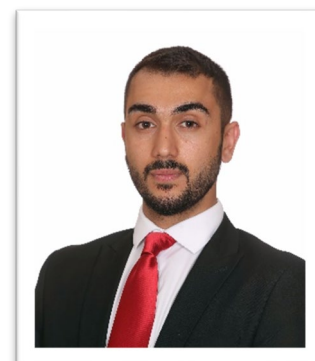


Enfield Climate Action Plan Interim Progress Report 2022

1. Introduction from Cllr Ergin Erbil Deputy Leader and Portfolio Holder for Climate Action



The Council adopted its long-term, forward-thinking Climate Action Plan in July 2020, with headline targets to be a carbon neutral organisation by 2030 and for the borough to be carbon neutral by 2040.

Within the Plan there was a commitment to:

“... review performance and publish our progress on an annual basis, using the key performance indicators set out in our plan. When we do that, we will invite the public and other stakeholders to comment on our performance and ask us questions about the progress we are making.”

This is the second progress report and represents the next step to reflect and refine, as we look to achieve carbon neutrality.

These reports highlight what has been achieved in a challenging time, from April 2021 to March 2022, as we began to emerge from the pandemic. Against the backdrop of vaccination and Covid recovery programmes, the beginning of higher energy costs, higher inflation rates and the cost-of-living crisis, the Council and its partners have continued to take climate action by:

- Further embedding Climate Action in the Council’s Plan and decision-making processes, with a stronger dedicated climate action and sustainability team, working closely with all teams within the council.
- Delivering the LED streetlight replacement programme, as well as implementation of various active travel schemes.
- Achieving the target of planting 100,000 trees as part of the Enfield Chase Restoration projects.
- Publishing our first Sustainable and Ethical Procurement Policy, which includes climate action considerations for use in the selection criteria for all of our procurements.
- Pushing forward with the retrofit of corporate buildings and Council housing stock, investing both our own capital, and finishing our first retrofit pilot, while

jointly leading the pan-London 'Retrofit London Programme' with Waltham Forest and development of the Retrofit London Housing Action Plan.

- Receiving an 'A-' rating, for our first submission to Carbon Disclosure Project, CDP.

We continue to seek a better understanding of our own carbon emissions. We are on-track for carbon neutrality, with a 19% reduction in emissions over our 2017 baseline. This is despite a small 'bounce-back' which was expected as we emerge from lockdown, which saw our corporate emissions increase by 1% compared to 2020/21.

In terms of borough emissions, collaborating with other borough's we have adopted a new London-wide methodology agreed with London Councils and we have committed to publishing a new baseline reflecting this change.

We have set out a clear direction of travel, but we recognise that the Council cannot achieve its ambitions alone so we want to engage more and more with local stakeholders, community organisations and residents. With more face-to-face meetings now possible, although there are difficult conversations ahead, we are confident that working together is the best way to achieve our shared goals of rapid carbon reductions.

We will continue to work with regional and national organisations to secure the tools and resources we need, and to share our learning. This is illustrated by the joint work we are doing with London Councils, UKGBC, Good Homes Alliance and ReLondon

As we review the next revision to the Climate Action Plan we will hold and engagement periods in November and December this year to continue to talk to people about this, receive feedback and get new ideas and form new partnerships. Please get in touch with us about being involved in this consultation.

I hope that you find this document interesting and thought-provoking. If you want to have your say about where we go next on our climate action journey, please email: climate.emergency@enfield.gov.uk

2. Progress in 2021/22

Below are highlights of climate action progress in the 2021/22 reporting period. For ease of reference they have been grouped under the thematic areas in the Climate Action Plan. In the appendix is more detail of every action.

Carbon neutral organisation

- The combined Scopes 1 and 2 total shows a 1% increase compared to 2020/21, which was expected due to the impacts on our operations arising from Covid reducing. This is an overall 19% reduction in the Council's direct emissions over the baseline which is on track with required trajectory.

Carbon neutral borough

- Due to a change in methodology, a new baseline will be established as part of the Climate Action Plan review, this will more closely align with our 2020 adoption of the Climate Action Plan. In the interim the most recent data available for 2019 shows emissions are 1% higher than the 2017 baseline year. The trajectory since setting a baseline from 2017 data is generally showing a downward trend for Scope 2, electrical emissions, but an upwards trend for Scope 1 emissions such as from road-based transport.

The Council's operations

- Have delivered Phase 1 of the Public Sector Decarbonisation Scheme, with over £3.1m of low-carbon retrofit works on Council buildings and maintained Schools (including heat pumps and solar panels).
- Through this scheme 589 additional solar panels have been added to 5 council building and a further 514 solar panels were also installed on 3 Council maintained schools.
- In addition, 10 Air Source Heat Pumps were installed to reduce reliance on natural gas and a pilot connection of a school site to the borough's heat network was completed.
- The Ethical and Sustainable Procurement Policy was finalised and adopted in February 2022.
- A distributed sustainability management system called the OnePlanet Platform is being trialled.
- The move to electric vehicle infrastructure is progressing, with 45 electric vehicles on order to be introduced into service and new electric vehicle charging points for the Civic Centre.



Image: The Council's new electric small van fleet

Travel

- The second phase of the A1010 cycle route and the Angel Walk walking and cycling path have been completed
- 12 School Streets and two Low Traffic Neighbourhoods have now become permanent, with a further 10 planned for 2022/23
- 96 electric charging sockets have now been installed across the borough.



Image: Angel Walk cycle path

Buildings

- The adopted Meridian Water Environmental Sustainability Strategy has been guiding the new developments and infrastructure.
- The draft of the Enfield Local Plan has Climate Action as a core theme and the recommended policies are now being reviewed in response to the consultation.
- The Council is delivering a range of retrofit measures across council homes which includes piloting the delivering of 10 deep retrofit projects with EnergieSprong through the Social Housing Development Fund (SHDF).
- Enfield Council, with Waltham Forest, is co-leading the Retrofit London Programme, which is aiming for an average of EPC B or equivalent across the Capital's housing by 2030.
- The [Enfield Excess Materials Exchange](#) has been developed for contractors and consultants kickstart the reuse of materials and to facilitate connections between 'donor' and 'recipient' construction projects.

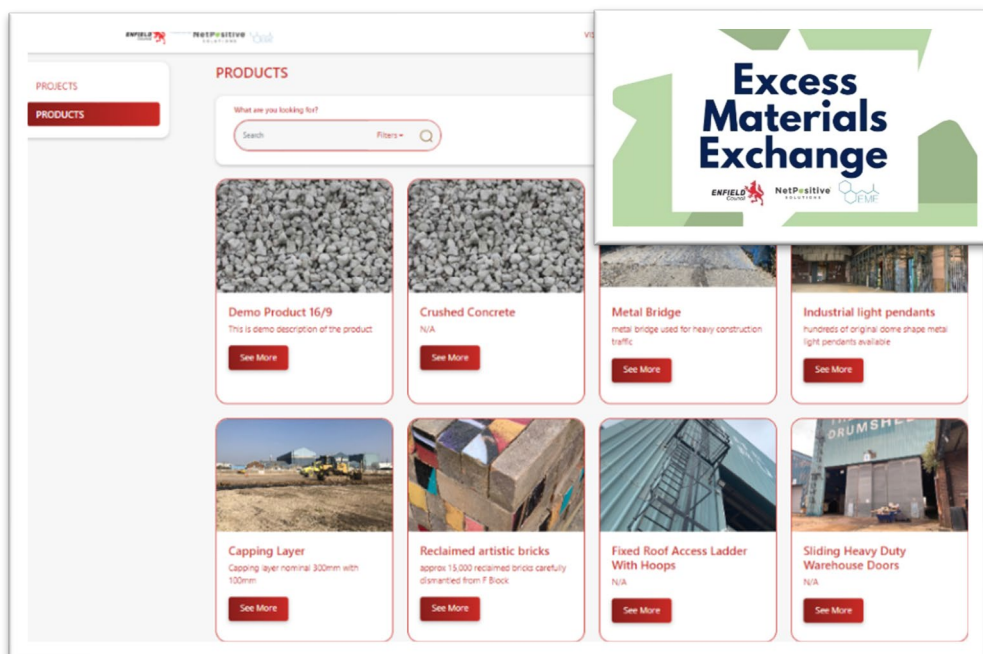


Image: Enfield's recently launched Excess Materials Exchange website

Waste

- The campaigns to encourage people to recycle and reuse more have continued, with a focus on residents avoiding contaminating their recycling with non-recyclables.
- The first phase of Meridian Water has reduced waste to land fill to under 1%

Energy

- A total of 743 homes were connected to Energetik by the end of the year, including 216 council owned properties.
- A pilot project connecting existing homes was completed and additional funding was sought to pilot a connection to an existing school site.
- Funding was secured to develop Local Area Energy Plan (LAEP). Key outcomes will include a review of potential heat new sources, a map of possible rooftop solar power sites across Enfield and long term electrical needs of the borough.



Image: Energetik pipework ready for installation across Enfield

Natural environment

- The number of new trees planted since 2020 has reached 100,000 and we have created 60 hectares of woodland
- Enfield has delivered Broomfield Park Wetlands and Albany Park River Restoration projects which involved the construction of wetlands.
- Close to 40 Rural SuDS in the upper catchment of the Salmons Brook were constructed.
- Enfield's Blue and Green Strategy was adopted outlining objectives and targets to be delivered.



Image: Albany wetlands project

Influencing others

- The Schools Climate Action Network meet termly; topics have included energy, recycling, sustainable travel, tree planting and flood resilience. The council have continued supported schools in tree planting and flood resilience projects.
- In its first carbon submission to the internationally recognised environmental data charity CDP, we received an 'A-' rating, for the quality of our submission. This data is then compiled to show overall progress from a local, city and national perspective.

Financing the plan

- The Council has been successful in securing significant external funding for housing and corporate building retrofit, transport projects and the Local Area Energy Plan.
- The Council has established guidance for the New Development Carbon Compensation Fund that manages carbon offset payments from developer contributions of large building projects.
- Work was begun on a review of options for an Enfield Carbon Fund.

3. Timeline for CAP full update

We are working towards a full review of the Climate Action Plan in spring 2023

Action	Date
Preliminary Drafting	September/October 2022
Engagement	November / December 2022
Incorporating comments	January 2023
Review	February 2023
Seeking approval and publication	March 2023

4. Engagement

The 2021/22 Climate Action Plan Progress Report will help inform our Climate Action Plan Full.

We are planning a series of engagement and consultation in November and December 2022 to cover both the progress review and the draft Full Review of the Climate Action Plan

More generally, we are interested to get the thoughts of the public and stakeholders, particularly on how we can best talk to people about our work and what is of most interest.

We would also love to hear about what you are doing and how you would like to be involved in the Council's climate action work.

Please email: climate.emergency@enfield.gov.uk

5. The detailed update on Climate Action Plan actions

The following pages contain the full detail of the 2021/2022 Climate Action Plan actions and indicators.

Appendix B1 – Annual CAP Actions & Indicator Reporting



Climate Action Plan - 2021/22 Progress Report

Plan:	Climate Action Plan - 2021/22 Progress Report
Organisation:	Climate
Administrator:	Enfield Council
Date range:	2015-01-01 - 2022-10-21

Last modified at: 20 Oct 2022, 13:51



1 Council's Operations

Outcomes

CO.1 Reduce emissions from Council Buildings

Achieve significant emissions reduction from council buildings and assets through an energy efficiency investment programme

CO.2 All procurement decisions prioritise low carbon and resilient options

Ensure all procurement decisions prioritise low carbon and resilient options

CO.3 Energy saving behaviour by council staff and those who use our buildings

Encourage and enable energy saving behaviour by council staff and those who use our buildings

CO.4 Divest the Council pensions from investment in fossil fuel companies

The Council's pension fund will invest in low carbon and fossil free equities and funds

OV.1 Carbon neutral council by 2030 adopted shared outcome

73% reduction in Scope 1 & 2 carbon emissions with residual emissions offset

A Actions

CO.1.01 Staff behaviour campaign

Review and improve how we use our buildings to minimise carbon emissions through a staff behaviours campaign.

Progress updates

Overall progress	Comment
	To be progressed

Progress updates

Progress updates	Details
01/07/2022	Delivery of action was disrupted during Covid-19. Now office usage has stabilised, CMFM is to review opportunities for introducing a staff behaviour campaign targetted at improving behaviours to reduce emissions such as energy usage, water and waste. This action is to be reviewed in Climate Action Plan 2022.

01/07/2021	Due to the impacts of Covid-19, staff have been focused on maintaining service provision with the majority working remotely. This means it has not been an opportune time to deliver a staff behaviour campaign.
------------	--

CO.1.02 Set new recycling targets for waste

Set new recycling targets for waste from council buildings and increase the quality of waste separation.

Progress updates

Overall progress	Comment
	To be progressed

Progress updates

Progress updates	Details
------------------	---------

01/07/2022 Recycling is collected as reported on in WA.1.5. CMFM to set up a working group with Waste team to review opportunities to set targets, review opportunities to improve waste reduction and separation and provide food waste collection.

01/07/2021 The Council has a Waste and Recycling Plan covering 2018 to 2022, which aligns with London wide targets.

CO.1.03 Switch all street lighting to LED

Switch all street lighting to LED

Progress updates

Overall progress



Comment

Completed

Progress updates

Details

01/07/2022 LED replacement programme completed in March 22, 94% of street lights and 84% of all assets are now LED.

01/07/2021 Programme continued despite disruption due to Covid-19 and was substantially completed by the end of March 2021. In addition, a zero carbon electricity supply contract was procured.

CO.1.04 Building heating system review

Review of building heating systems and operations, including feasibility of lower carbon systems.

Progress updates

Overall progress



Comment

In progress

Progress updates

Details

01/07/2022 Low carbon heating system options are being considered for all boiler replacement projects, and will be progressed where feasible. Funding has been sought from Salix LCSF to undertake Heat Decarbonisation Plans, and heat decarbonisation is scoped within feasibility studies commissioned. CMFM is continuing to seek to regularise the resourcing to enable this action to be delivered.

01/07/2021 Pilot projects for ASHP and Heat Network retrofit were undertaken as part of the PSDS Phase 1 Scheme, where lessons learnt will be distilled.

01/07/2021 As part of a successful bid for Government funding (the Public Sector Decarbonisation Scheme), a number of sites have been surveyed and related improvements identified.

CO.1.05 Reduce energy consumption

Install light sensors and timers for heating and air conditioning units in all council buildings.

Progress updates

Overall progress

Comment



In progress

Progress updates

Details

01/07/2022

As CO.1.9 action is being progressed as part of wider council corporate building retrofit, with a renewed focus on heat decarbonisation. Phase 1 of the Public Sector Decarbonisation scheme has delivered, which included improved controls (VSDs) in the Civic Centre. Opportunities for improvements to sensors and controls for MEP systems will continue to be identified for invest to save projects.

01/07/2021

As part of a successful bid for Government funding (the Public Sector Decarbonisation Scheme), a number of sites have been surveyed and related improvements identified.

CO.1.06 Energy sub-metering at Civic Centre

Install sub-metering at the civic centre to comprehensively meter energy consumption on a floor by floor basis.

Progress updates

Overall progress

Comment



To be progressed

Progress updates

Details

25/08/2022

Some sub-metering exists on individual plant items such as newly installed ASHP and Solar PVs. Metering approach to be included as part of energy and MEP strategy for Civic Centre

01/07/2021

Some existing sub-metering has been identified, although this only covers a small proportion of existing buildings.

CO.1.07 Water metering installation

Install water metering for all council building

Progress updates

Overall progress

Comment



On track

Progress updates

Details

01/07/2022

The majority of the council's supplies are metered. Water contract was awarded in April 2021 with continuing review of the meters. Once all meters are captured, AMR will be considered for more detailed data and improved use/cost monitoring, providing tools for the Council to save water.

01/07/2021

The majority of the council's supplies are metered. Water contract was awarded in April 2021 with continuing review of the meters. Once all meters are captured, AMR will be considered for more detailed data and improved use/cost monitoring, providing tools for the Council to save water.

CO.1.08 Provide charging infrastructure at council offices

Install Electric Vehicle charging points to serve all council owned office sites.

Progress updates

Overall progress



Comment

On track

Progress updates

Details

01/07/2022

EV chargers have been installed at Morson Road and Civic Centre inline with EV charging requirements of fleet vehicles. Out of the 24 sockets recently installed at the Civic Centre, 16 have been allocated for staff use.

01/07/2021

The provision and management of electric vehicle charging has been brought under one team which will act as client for the wider Council. Work has started to procure electric vehicle charging capacity with the initial focus being on Council fleet requirements.

CO.1.09 Deliver comprehensive refurbishment programme

Deliver a comprehensive refurbishment programme including LED lights in all council buildings, voltage optimisation, battery storage and replacement of office equipment (photocopiers, refrigerators, monitors) with the lowest energy versions.

Progress updates

Overall progress



Comment

On track

Progress updates

Details

01/07/2022

Action is being progressed as part of wider council corporate building retrofit, with a renewed focus on heat decarbonisation. Phase 1 of the Public Sector Decarbonisation scheme has delivered, which included ASHPs, solar panels, insulation and controls. Council to continue to develop and deliver retrofit in line with maintenance programme and available funding schemes to reduce carbon emissions of buildings. Link with CO.1.5 and CO.1.4

01/07/2021

As part of a successful bid for Government funding (the Public Sector Decarbonisation Scheme), a number of sites have been surveyed and related improvements identified.

CO.1.10 2% council solar increase per year

Using the available roof capacity available on council owned buildings, increase solar coverage by 2% per year

Progress updates

Overall progress



Comment

Exceeding target

Progress updates

Details

01/07/2022

589 additional solar panels (206 kWp) have been added to five council buildings through the delivery of Phase 1 of the Public Sector Decarbonisation Scheme. Solar coverage increased by over 200% on council operational buildings. A further 514 solar panels (201 kWp) were also installed on three council-owned maintained schools as part of the scheme.

01/07/2021

Public Sector Decarbonisation Scheme funding has been secured which will be used to undertake works including the installation of PV panels. Future Neighbourhoods 2030 funding also applied for, which would support installation of solar PV on the Building BloQs site. In addition, a pilot site services cabin on Meridian Water incorporates PVs.

CO.1.11 Convert refuse fleet to electric

Convert the Council fleet to 60% electric by 2025/26 and 100% electric by March 2030 as contracts come up for renewal.

Progress updates

Overall progress

Comment



On track

Progress updates

Details

01/07/2022

The move to electric infrastructure is in progress, with 45 electric vehicles on order to be introduced into service. Electric infrastructure works at the Civic Centre and Pymmes Park have started to accommodate EV charging points. The council has also completed the move to a GTL Diesel-variant fuel in 2021 as a cleaner alternative.

01/07/2021

Whilst the market for fleet electric vehicles matures (there are currently very few products which meet the Council's operational needs at an affordable price) the focus is on improving the carbon efficiency of the existing fleet. To this end the Council has committed to use a diesel variant which generates around 5% less carbon emissions in use.

CO.2.01 Integrate climate assessment into the decision-making process

Integrate climate assessment into the council decision-making process, focusing on carbon emissions and climate resilience.

Progress updates

Overall progress

Comment



On track

Progress updates

Details

01/07/2022

Environment and Climate Change considerations are now included in all corporate reports. Opportunities are being considered to improve robustness of reporting. This could specifically include carbon calculations for each decision (see CO.3.2)

01/07/2021

In June 2020 Environment and Climate Change considerations were included in corporate reports.

CO.2.02 Survey top 30 suppliers about their carbon footprints

Survey top 30 suppliers about their carbon footprints

Progress updates

Overall progress

Comment



In progress

Progress updates

Details

01/07/2022 Per CO.2.2, 42 suppliers responded to a survey undertaken to support development of the draft Ethical and Sustainable Procurement Policy.

This action will be reviewed in the 2022 Climate Action Plan with the restructured Procurement team.

01/07/2021 42 suppliers responded to a survey undertaken to support development of the draft Ethical and Sustainable Procurement Policy.

CO.2.04 Switch (to REGO) for council offices

Switch to 100% REGO certified renewable electricity supply. This means no longer buying energy generated from coal.

Progress updates

Overall progress



Comment

Completed

Progress updates

Details

01/07/2022 The Council's corporate electricity supplies switched in October 2020.

01/07/2021 The Council's corporate electricity supplies switched in October 2020.

CO.2.05 REGO renewable energy procurement

Switch to 100% REGO certified renewable electricity supply. This means no longer buying energy generated from coal.

Progress updates

Overall progress



Comment

On track

Progress updates

Details

01/07/2022 Action complete for Council sites and communal housing areas. REGO for schools is expected to be included in the 2024 energy contract.

01/07/2021 Action complete for Council sites and communal housing areas. Need to undertake further work in respect of supplies to schools.

CO.2.05 Switch (to REGO) for maintained schools

Progress updates

Overall progress



Comment

In progress

Progress updates

Details

01/07/2022	REGO backed electricity for school is expected to be implemented under the 2024 contract
01/07/2021	Analysis of school supplies has been undertaken to inform engagement on the corporate energy contract.

CO.2.06 Switch (to REGO) for council communal housing

Progress updates	
Overall progress	Comment
	Completed
Progress updates	Details
01/07/2022	The Council's corporate electricity supplies switched in October 2020
01/07/2021	The Council's corporate electricity supplies switched in October 2020.

CO.2.07 Identify 30 greatest carbon emitting products used

Identify the 30 products we purchase which produce the greatest carbon emissions (by value or volume) in order to better understand our scope 3 emissions, and to set targets for emissions reductions for these largest emitters.

Progress updates	
Overall progress	Comment
	To be progressed
Progress updates	Details
01/07/2022	The recently adopted Sustainable and Ethical Procurement Policy (2022) helps set baselines and better track Scope 3 emissions. This action has not been progressed and will be reviewed in the Climate Action Plan Rev.2.0 with the restructured Procurement team
01/07/2021	Focus has been on supplier engagement with products to follow.

CO.2.08 Advise smaller suppliers

Provide advice to smaller suppliers on how they can assist the council's efforts to be carbon neutral.

Progress updates	
Overall progress	Comment
	In progress
Progress updates	Details

01/07/2022

The recently adopted Sustainable and Ethical Procurement Policy (2022) sets a 3-tier approach to carbon emission assessment and reporting from suppliers, and a commitment to move toward sustainable practices (in energy, travel, water, waste and purchased good areas) as per the scale of their contract.

01/07/2021

Focus has been on supplier engagement with some analysis to inform supplier selection.

CO.2.09 Understand the embodied carbon from: construction, other products and services

Undertake an investigation to understand the embodied carbon from a) construction b) other products and services and identify lower carbon alternatives.

Progress updates

Overall progress

Comment



In progress

Progress updates

Details

25/08/2022

For embodied carbon in new housing projects, including Meridian Water, please refer to BU.1.7 For other products and services, the Sustainable and Ethical Procurement Policy requests Declaration of Scope 3 emissions, Environmental Product Declarations, Take-back schemes and Circular Economy Statements depending on the size of supplier. The assessment of these will be used in the selection of tenderers.

01/07/2021

As part of our Scope 3 carbon accounting process we have begun to investigate how to monitor and account for GHG emission related to embodied carbon including an initial estimate related to council housing development. As part of our action to develop an Embodied Carbon approach, we have incorporated requirements within our new council housing design standards to undertake embodied carbon assessments for new council developments along with embodied carbon targets. Through the Meridian Water development, to meet embodied carbon targets, investigation into lower carbon product alternatives is being undertaken.

CO.2.10 Survey top 50 suppliers

Survey top 50 suppliers about their carbon footprints

Progress updates

Overall progress

Comment



In progress

Progress updates

Details

01/07/2022

Per CO.2.2, 42 suppliers responded to a survey undertaken to support development of the draft Ethical and Sustainable Procurement Policy.

This action will be reviewed in the 2022 Climate Action Plan with the restructured Procurement team.

01/07/2021

42 suppliers responded to a survey undertaken to support development of the draft Ethical and Sustainable Procurement Policy.

CO.2.11 Opportunities for green gas

Review opportunities for being supplied by green gas.

Progress updates

Overall progress

Comment



In progress

Progress updates

Details

05/09/2022

Green gas has remained considerably more expensive than brown, however, given the existing market this is subject to change and will be reviewed with the new contract arrangements at end of 2022 (new contract starts Oct 2024).

01/07/2021

This is being kept under review as national approaches to energy provision are developed.

CO.2.12 Identify lower carbon alternatives with top 30 suppliers

Work with our top 30 suppliers to identify low carbon alternatives.

Progress updates

Overall progress

Comment



To be progressed

Progress updates

Details

01/07/2022

Per CO.2.2, 42 suppliers responded to a survey and their responses were incorporated in the Ethical and Sustainable Procurement Policy. This action will be reviewed in the Climate Action Plan Rev.2.0 with the restructured Procurement team

01/07/2021

42 suppliers responded to a survey undertaken to support development of the draft Ethical and Sustainable Procurement Policy.

CO.3.01 Trial an internal carbon price with one Council department

Trial an internal carbon price with one Council department and extend that if it helps with decision-making.

Progress updates

Overall progress

Comment



In progress

Progress updates

Details

01/07/2022

The council trialled a 'triple bottom line' assessment of a Meridian Water construction project (F-Block), using the BEIS 'Valuation of Valuation of greenhouse gas emissions: for policy appraisal and evaluation', using pricing carbon in 2021 as £258/tCO₂e. Continuing to be considered as part of robust assessment of Environment and Climate Change implications of council decisions.

See also item FI.1.4 - regarding pricing issues in relation to a corporate carbon fund.

01/07/2021

Background work has been undertaken to look at options for developing a carbon price.

CO.3.02 Require carbon and climate impact in decision making

Require carbon and climate impact to be considered when making decisions.

Progress updates

Overall progress



Comment

On track

Progress updates

Details

01/07/2022

Environment and Climate Change considerations are now included in all corporate reports (as indicated in CO.2.1). Opportunities for an approach for calculating impact need to be explored further

01/07/2021

In June 2020 carbon implications were included in corporate reports.

CO.3.03 Develop 'green' leases for commercial lessees

Develop 'green' leases for commercial lessees to encourage better low carbon installation and operational behaviour.

Progress updates

Overall progress



Comment

In progress

Progress updates

Details

01/07/2022

Green Leases are being explored as part of the Council led Meridian Water development.

01/07/2021

The Council has a range of leased premises across a portfolio that broadly covers community, industrial, retail and rural. Further work is required to understand the detailed lease arrangements and identify opportunities to reduce carbon emissions from the Council's commercial properties.

CO.3.04 Implement carbon/climate literacy programme

Implement a rolling carbon/climate literacy programme, prioritising teams with the greatest impact

Progress updates

Overall progress



Comment

In progress

Progress updates

Details

01/07/2022

Two council employees participated in Carbon Literacy Project training delivered at the Suntrap Forest Centre to test the format for cross-council training. Completing this training comes with a certificate.

Enfield has also joined a partnership with neighbouring councils to collaborate on a programme for inhouse carbon literacy training. The Meridian Water Team has launched a sustainable living training for staff and the community.

01/07/2021

Background work has been undertaken to inform training programme for staff. And there has been bespoke training for high impact teams in the Planning Service.

CO.4.01 Invest pension fund in low carbon and fossil free equities and funds

Further 10% of the pension fund is invested in fossil free equities and renewable / clean energy funds.

Progress updates

Overall progress

Comment



In progress

Progress updates

Details

01/04/2022

As reported in CO.4.3

01/07/2021

The Council's Pensions and Investment Committee have developed a Responsible Investment Policy which commits to reducing exposure to fossil fuels and reducing carbon impacts. The Responsible Investment Policy has targets which are less ambitious than those in the Climate Action Plan, although it should be noted that considerations were put forward in respect of this: The pension fund trustees must balance financial returns with other factors including Environmental, Social and Governance (ESG) Issues. Sudden divestment can have significant cost impacts, which is at odds with the fiduciary duties of the fund. As a large corporate investor, maintaining investment in companies can be used as a lever to change their behaviours and investment approaches. The approach will be reviewed in 2022, at which point the target could be altered to reflect new opportunities arising from carbon neutral investments becoming more mainstream.

CO.4.02 Develop a Pension Fund Investment Strategy

Develop and agree a Pension Fund Investment Strategy which increases the level of investment in low carbon and fossil free equities and funds whilst still meeting obligations to pension fund members.

Progress updates

Overall progress

Comment



In progress

Progress updates

Details

01/09/2022

The Investment strategy has been reviewed, with a view to increasing investing in clean energy funds. Following the 2022 local elections, the new cabinet members are undertaking training to enable them to make informed investment decisions.

01/07/2021

The Council's Pensions and Investment Committee have developed a Responsible Investment Policy which commits to reducing exposure to fossil fuels and reducing carbon impacts. The Responsible Investment Policy has targets which are less ambitious than those in the Climate Action Plan, although it should be noted that considerations were put forward in respect of this: The pension fund trustees must balance financial returns with other factors including Environmental, Social and Governance

CO.4.03 100% divestment of fossil fuels from council pension funds

Achieve 100% divestment of fossil fuels from all council pension funds.

Progress updates

Overall progress**Comment**

On track

Progress updates**Details**

01/07/2022

As of March 2022 c1.2% equating to £17.9M are invested in fossil fuels and 5% is allocated to fixed income ESG bonds.

In light of the ongoing war in Ukraine and the consequent geo-political situation, priority has been given to divest funds from Russia. Paris Aligned Funds are being reviewed to ensure these are adjusted to the council's wider priorities.

01/07/2021

The Council's Pensions and Investment Committee have developed a Responsible Investment Policy which commits to reducing exposure to fossil fuels and reducing carbon impacts. The Responsible Investment Policy has targets which are less ambitious than those in the Climate Action Plan, although it should be noted that considerations were put forward in respect of this: The pension fund trustees must balance financial returns with other factors including Environmental, Social and Governance (ESG) Issues. Sudden divestment can have significant cost impacts, which is at odds with the fiduciary duties of the fund. As a large corporate investor, maintaining investment in companies can be used as a lever to change their behaviours and investment approaches. The approach will be reviewed in 2022, at which point the target could be altered to reflect new opportunities arising from carbon neutral investments becoming more mainstream.

**Indicators**

CO2/CA002 Emissions per employee

adopted shared indicator

tCO2e/pp Emissions per employee

Progress updates**Overall progress****Comment**

On track

Monitoring

Target date	Target value	Benchmark	Unit
31/12/2030	1.83	7.3	tCO2e/employee
Date	Value		
31/03/2022	4.8		
31/03/2021	5.4		

CO5 (Not reported) # council offices with charging provision

adopted shared indicator

Number of Council offices with access to charging provision for council fleet and staff vehicles

INDICATOR NOT REPORTED - UNDER REVIEW

CO4 % electric council fleet

adopted shared indicator

% Council fleet that is fully electric

Progress updates

Overall progress

Comment



In progress

Monitoring

Target date

Target value

Benchmark

Unit

31/03/2026

60

0

%

Date

Value

31/03/2022

1

31/03/2021

1

CO9 % divested from fossil fuels

adopted shared indicator

Percentage of pension fund assets invested in companies involved in the production and distribution of fossil fuels.

Progress updates

Overall progress

Comment



On track

Monitoring

Target date

Target value

Benchmark

Unit

06/09/2022

100

0

%

Date

Value

31/03/2022

98.8

CO3 (Not reported) Emissions per home managed

adopted shared indicator

Emissions per home managed

INDICATOR NOT REPORTED - UNDER REVIEW

CO6 % staff completed training

adopted shared indicator

% staff completed climate related training

Progress updates

Overall progress

Comment



To be progressed

Monitoring

Target date	Target value	Benchmark	Unit
31/03/2030	100	0	%
Date	Value		
31/03/2022	0.05		
31/03/2021	0		

CO7 (Not reported) % supplier respondents

adopted shared indicator

% respondents to carbon neutral suppliers survey

INDICATOR NOT REPORTED - UNDER REVIEW

CO1/CA 001 % reduction in Council carbon emissions

% reduction of total Scopes 1 and 2 carbon emissions compared to 2018/19 baseline of 21,908 tCO2e.

Progress updates

Overall progress	Comment
	On track

Monitoring

Target date	Target value	Benchmark	Unit
31/03/2030	73	0	%
Date	Value		
31/03/2022	18		
31/03/2021	20		



2 Travel

Outcomes

TR Decarbonised transport system adopted shared outcome

TR.1 More active transport adopted shared outcome

Work with partners to change the way people move around the borough so that they are less dependent on private vehicles and use public transport, walk and cycle more

TR.2 Staff that travel sustainably adopted shared outcome

Staff that travel less & choose low-carbon travel

TR.3 Reduced emissions from road-based transport

A Actions

TR.1.01 Complete main Cycle Enfield routes

Complete main Cycle Enfield routes

Progress updates

Overall progress	Comment
	On track

Progress updates	Details
01/09/2022	The A1010N route (scheme split into two sections) as well as the Angel Walk walking and cycling path have been completed.
01/07/2021	Delivery of main routes on A105 and A1010 has been completed.

TR.1.02 Low Traffic Neighbourhoods across the borough

Roll out Low Traffic Neighbourhoods across the borough.

Progress updates

Overall progress	Comment
	On track

Progress updates	Details
01/04/2022	The two Quieter Neighbourhoods have been installed permanently. Connaught Gardens Phase 1 was introduced on an experimental basis.

01/07/2021

Two low traffic neighbourhoods have been introduced on an experimental basis.

TR.1.03 Increase public transport service provision

Continue to work with Transport for London, train operators and Network Rail to increase public transport service provision. This includes delivering new infrastructure across the borough.

Progress updates

Overall progress



Comment

In progress

Progress updates

Details

01/07/2021

A new bus route, the 456, has been delivered and significant funding has been secured from new developments to improve public transport services.

01/04/2022

TfL is in a 'managed decline' status due to ongoing funding challenges, which will limit new opportunities coming forward. The council will continue to work with TfL if and when opportunities are available.

TR.1.04 Limit provision of car parking on new developments

Limit the provision of car parking spaces on new developments in line with the New London Plan and better manage existing kerbside space.

Progress updates

Overall progress



Comment

On track

Progress updates

Details

25/08/2022

This is being delivered on an ongoing basis via the planning process.

01/07/2021

This is being delivered on an ongoing basis via the planning process.

TR.1.05 Provision of car clubs

Support the provision of car clubs where it reduces car use and ownership.

Progress updates

Overall progress



Comment

In progress

Progress updates

Details

25/08/2022

This is being delivered on an ongoing basis via the planning process.

01/07/2021

This is being delivered on an ongoing basis via the planning process.

TR.1.06 Increase cycle parking spaces

Increase the provision of cycle parking on-street, at Council buildings and in new developments (in line with London Plan standards).

Progress updates

Overall progress



Comment

On track

Progress updates

Details

01/07/2022

Cycle parking on new developments is continuing to be secured in line with London Plan targets where this is feasible

01/07/2021

There has been progress across these three strands: On-street provision has increased with more cycle hangars on residential streets and hubs at strategic locations. Providing improved cycling facilities is part of the Build the Change programme. Cycle parking on new developments has been secured in line with London Plan targets where this is feasible.

TR.1.07 Two new 'school streets' per year

Introduce at least two new 'school streets' each year so that parents and children are encouraged to travel to school using active and sustainable transport.

Progress updates

Overall progress



Comment

On track

Progress updates

Details

01/04/2022

The initial 12 school streets were made permanent. A further 10 school streets are to be introduced in 22/23."

01/07/2021

12 were introduced.

TR.2.01 Staff mileage policy

Review staff mileage policy and approach to business travel.

Progress updates

Overall progress



Comment

To be progressed

Progress updates

Details

25/08/2022

Action needs to be progressed and will be reviewed as part of CAP 22 full review.

01/07/2021

Work had previously been undertaken to look at staff mileage which indicated potential savings both in terms of carbon emissions and expenses claims.

TR.2.02 Investment in pool cars & bicycles

Deliver year on year investment in pool cars and pool bicycles.

Progress updates

Overall progress



Comment

To be reviewed

Progress updates

Details

01/07/2022

In 2021/22 the Covid-19 pandemic was still having an impact on staff travel patterns. Now these have to some extent stabilised, there is an opportunity to review the extent of private car use for business travel and whether pool bikes and cars would be a viable solution

01/07/2021

Previous work identified opportunities for pool bikes and cars to support staff to travel actively and reduce the use of private vehicles.

TR.2.03 Increase parking charges at council offices

Increase charges for staff parking at council offices

Progress updates

Overall progress



Comment

On track

Progress updates

Details

01/09/2022

A review was undertaken to increase staff parking charges at council offices by 30%, to be implemented in 22/23

01/07/2021

Work in this area will be progressed when the impact of Covid-19 on staff travel and changes to the Council's property portfolio can be assessed.

TR.2.04 Reduce private vehicle parking spaces at council offices

Reduce the number of available parking spaces at council offices for private vehicles.

Progress updates

Overall progress



Comment

On track

Progress updates

Details

01/04/2022

A review is in progress with a proposed reduction of 132 spaces, decreasing the parking at council offices from 343 to 283.

01/07/2021

Work in this area will be progressed when the impact of Covid-19 on staff travel and changes to the Council's property portfolio can be assessed.

TR.2.05 Council office charging infrastructure

Install charging infrastructure at all council office sites

Progress updates

Overall progress



Comment

Duplicate action to CO.1.8

Progress updates

Details

01/09/2022

Refer to action CO.1.8

01/07/2021

Work in this area will be progressed when the impact of Covid-19 on staff travel and changes to the Council's property portfolio can be assessed.

TR.2.06 Staff work from home

Encourage staff to work from home when they can

Progress updates

Overall progress



Comment

On track

Progress updates

Details

25/08/2022

A new Smart Working Policy has been adopted, which includes ongoing support of working from home. The majority of the non-site specific workforce now designated as 'Flexible Workers'.

01/07/2021

This has been by the Smart Working Policy, including recent updates to reflect the impacts of Covid-19 on staff working patterns.

TR.3.01 EV charging infrastructure in all new developments

Include Electric Vehicle charging infrastructure in all new developments meeting the minimum London Plan threshold.

Progress updates

Overall progress



Comment

On track

Progress updates

Details

23/08/2022

The Council continues to secure electric vehicle charging provision in line with London Plan requirements.

01/07/2021

The Council has continued to secure electric vehicle charging provision in line with London Plan requirements.

TR.3.02 Increase # low and zero emission buses

Work with TfL to increase the number of low and zero emission buses.

Progress updates

Overall progress



Comment

On track

Progress updates

Details

23/08/2022

The TFL's entire fleet of around 9000 buses meet the ULEZ-compliant Euro VI emission standards, reducing emissions of nitrogen oxide by up to 90%. Of this, more than 800 are zero-emission buses and 20 hydrogen buses.

01/07/2021

There is already a zero emission bus zone in Enfield which runs from Edmonton to Seven Sisters. In addition, TfL are moving towards an all low or zero carbon fleet.

TR.3.03 Provide >250 EV charging sockets

Increase the provision of public highway and car park electric vehicle charging infrastructure to provide at least 250 sockets.

Progress updates

Overall progress



Comment

On track

Progress updates

Details

23/08/2022

Continued roll-out of EV chargers, 96 EV charging sockets are now available across the borough

01/07/2021

Over 80 additional electric vehicle charging sockets have been procured and installation has commenced.

I Indicators

TR2 % sustainable mode share by residents

adopted shared indicator

% of trips originating in Enfield that are made by active, efficient and sustainable modes.

Progress updates

Overall progress



Comment

In progress

Monitoring

Target date

Target value

Benchmark

Unit

31/03/2041

69

53

%

Date	Value
31/03/2021	55

TR1 (Not reported) % staff commuting with sustainable transport modes adopted shared indicator

NO DATA AVAILABLE - TO BE REVIEWED

Progress updates



Monitoring

Target date	Target value	Benchmark	Unit
31/12/2022			

TR4 % residents within 400m of cycle network adopted shared indicator

% of population within 400m of strategic cycle network

Progress updates



Monitoring

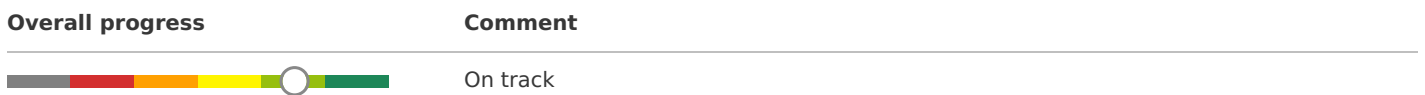
Target date	Target value	Benchmark	Unit
31/03/2041	61	16	%

Date	Value
31/03/2021	27

TR5/ CA006 # EV charging sockets adopted shared indicator

of additional electric vehicle charging sockets installed on public highway and in public car parks managed by the Council.

Progress updates



Monitoring

Target date	Target value	Benchmark	Unit
31/12/2025	250	19	#

Date	Value
31/03/2022	96
31/03/2021	83



3 Buildings

Outcomes

BU Net zero buildings

BU.1/3 Net Zero emission new builds

Deliver net zero emission new builds across Enfield

BU.2 Net zero retrofit

adopted shared outcome

Deliver and encourage net zero emission retrofit across Enfield

Actions

BU.1.01 Connect MW homes to Energetik

Connect first new homes on Meridian Water to the Energetik decentralised heat network.

Progress updates

Overall progress



Comment

On track

Progress updates

Details

01/07/2022

Energetik's Meridian Water heat network and energy centre at the Edmonton EcoPark are now close to completion. The supply of construction heat is due to commence in October 2022 and depending on the delivery of the Meridian Water development, we expect to be supplying first occupants in the first half of 2023.

01/07/2021

The Meridian Water development is progressing and will include connections to the Energetik heat network. The laying of pipework between Meridian Water and the Energetik plant is underway

BU.1.02 Deliver new local plan

Deliver a new local plan that is in line with the higher standards of the New London Plan in terms of climate change and net zero carbon homes.

Progress updates

Overall progress



Comment

On track

Progress updates

Details

01/07/2022

The Reg18 Enfield Local Plan was subject to public consultation in the summer of 2021. Climate Action was a core theme and the recommended policies are now being reviewed in response to the consultation. Consideration is being given to recent building regulation updates and subsequent revision to GLA guidance.

BU.1.03 New homes meet net zero requirements

Require new homes to meet the net zero requirements outlined in the New London Plan or exceed this where the opportunity arises.

Progress updates

Overall progress

Comment



On track

Progress updates

Details

All new developments are required to meet the net zero requirements as set out in the London Plan and supplementary guidance, this is enforced through the planning process. A dedicated officer within the Climate Action & Sustainability Team has been appointed to support the planning team in enforcing net zero policies and pushing for the highest standard of performance.

A revised Design Standards and Performance Specifications guidance document for Council housing was prepared by the Regeneration Team in collaboration with the Climate Action team and was internally adopted. This document included metrics to further push beyond policy requirements and increase reporting transparency.

The council's flagship Meridian Water development has adopted the Environmental Sustainability Strategy (ESS), which exceeds the London Plan requirements. Progress against the ESS targets and being measured and monitored.

01/07/2022

There has been engagement with relevant teams, which has informed the preparation of bespoke training to enable planning officers to better assess the carbon emissions impacts of new development.

01/07/2021

BU.1.04 Developers build net zero homes

Require developers to build net zero homes in line with the New London Plan, pushing for the highest standards and renewables before offsets are considered.

Progress updates

Overall progress

Comment



On track

Progress updates

Details

All new developments are required to meet the net zero requirements as set out in the London Plan and supplementary guidance, this is enforced through the planning process. A dedicated officer within the Climate Action & Sustainability Team has been appointed to support the planning team in enforcing net zero policies and pushing for the highest standard of performance. Fabric efficiency as the first stage of the Energy Hierarchy is encouraged, with carbon offset as the last option after onsite reduction have been maximised.

In-house training has been delivered to the Planning team and is scheduled to have continued training sessions and updates.

The Climate Action & Sustainability Team has adopted New development carbon compensation fund, reviewing the role of the previous carbon offset fund. The price of carbon is under review as part of the Local Plan update to incentivise on-site reduction and reflect the true price of offset.

01/07/2022

As set out for non-domestic developments in BU.3.2

01/07/2021

There has been engagement with relevant teams, which has informed the preparation of bespoke training to enable planning officers to better assess the carbon emissions impacts of new development.

BU.1.05 New developments >20 units undertake POE

Require every new development over 20 units in size to undertake post occupancy evaluation for two years after occupation on a percentage of properties and to supply performance data to Enfield's Planning and Climate Action teams.

Progress updates

Overall progress

Comment



In progress

Progress updates

Details

01/07/2022

All major developments are now required to comply with the London Plan's Be Seen reporting for energy monitoring. This requirement is being secured through the S106 process for as-built and in-use monitoring for 5 years. Data is currently held by the GLA, opportunities to access data will be explored as it becomes more established.

01/07/2021

This relates to the recently published London Plan so will be progressed now that the related planning policy has been formally recognised.

BU.1.06 BREEAM 'Outstanding' council facilities

Ensure that all council developed facilities are built to BREEAM In Use 'Outstanding'

Progress updates

Overall progress

Comment



To be reviewed

Progress updates

Details

01/07/2022

This action is proposed to be reviewed and aligned with Local Plan requirements for BREEAM, noting Planning is most robust form of enforcing higher standards. Focus of council-led new developments to be around minimising carbon emissions, inline with net-zero target, noting this may not always align with highest BREEAM rating of 'Outstanding'.

01/07/2021

This will be the aspiration for relevant projects as they come forward, although an initial review suggests that these will be limited in the near term.

BU.1.07 Measure embodied carbon for new Council developments

Develop an approach for measuring the embodied carbon for the Council's new developments.

Progress updates

Overall progress

Comment



On track

Progress updates

Details

The Council follows the 2021 London Plan requiring a whole-life carbon analysis (WLCA) for every referable planning application and encourages a similar evaluation for major applications. This has been included in the New Local Plan as a Reg18 policy recommendation for all major developments, alongside embodied carbon targets.

A revised Design Standards and Performance Specifications guidance document for Council housing was prepared by the Regeneration Team in collaboration with the Climate Action team and was internally adopted. This document included a requirement for whole life carbon analysis for all developments.

The Meridian Water Sustainability Strategy outlines an approach to embodied carbon, which is continuing to be tracked as a project target. Enfield have launched a Materials Exchange platform to re-use building materials from demolition sites to be re-used in other projects, this is being rolled out London-wide. Alongside this, the Council is hosting a bi-monthly Enfield Circular Economy Construction Forum

01/07/2022

The Meridian Water Environmental Sustainability Strategy outlines an approach to embodied carbon. Embodied carbon targets and related requirements have been included in draft Council Design Standards for all new Council housing developments. The published London Plan has whole life carbon and circular economy statements as a requirement for major projects. There are also policies and principles, in addition to targets, proposed to be adopted as part of the Draft Local plan, which is currently out for consultation

01/07/2021

BU.2.01 Join the CEEB

Join the Coalition of Energy Efficient Buildings (CEEB) to develop new instruments to deliver low carbon retrofit across tenures in Enfield.

Progress updates

Overall progress

Comment



On track

Progress updates

Details

01/07/2022

The Council continues to be a member of CEEB network and engage in opportunities per IN.1.3.

01/07/2021

The Council became a member of CEEB in July 2020.

BU.2.02 Share net zero knowledge

Work proactively with housing associations and other housing providers to share knowledge and embed a zero carbon approach across mixed tenure homes.

Progress updates

Overall progress

Comment



On track

Progress updates

Details

The Council is part of a cohort of councils, housing associations and contractors delivering on the Social Housing Decarbonisation Fund, who are sharing experiences through the delivery of the EnergieSprong scheme.

The Council is also member in a number of Retrofit inter-council and UK-wide working groups led by GHA, Retrofit London and UKGBC.

Opportunity for the Council to utilise the existing Housing Association Group Forum to discuss retrofit.

01/07/2022

01/07/2021

The Council has been engaging with a range of partners and sharing knowledge through membership of organisations such as the Good Homes Alliance, via the UKGBC Foreground programme and through the registered provider framework procurement process.

BU.2.03 Develop retrofit plan

Develop low carbon council housing retrofit plan

Progress updates

Overall progress



Comment

In progress

Progress updates

Details

01/07/2022

The Council's Housing Asset Management and Sustainability Strategy is being developed and will include a strategy for improving Council housing assets through retrofit measures. The Retrofit London Programme also supports this work.

01/07/2021

The Council's Housing Asset Management and Sustainability Strategy is being developed and includes improving Council housing assets through retrofit measures. The Retrofit London Programme will also support this work going forward.

BU.2.04 Access funding to retrofit of Enfield schools

Identify and access funds for low carbon retrofit of Enfield schools.

Progress updates

Overall progress



Comment

In progress

Progress updates

Details

01/07/2022

The council have continued supported schools in tree planting and flood resilience projects, and secured grant funding for the installation of solar panels and low carbon heating systems. This includes accessing £794k of funding through the Public Sector Decarbonisation Phase 1 Scheme to install; 514 solar panels (201 kWp) on three council owned maintained schools, upgrade low performing rooflights at one school and install low-carbon alternatives for boiler replacements at two schools. These alternatives included piloting an Hybrid- Air Source Heat Pump and a connection to the Heat Network, removing natural gas from the site. Further, through the Carbon Offset Fund, the council has also supported five schools with the installation of energy metering sensors and educational software to identify opportunities for energy and carbon savings.

01/07/2021

There has been engagement with schools, including via the Schools Climate Action Network and initial engagement with School Business Managers, about climate action and reducing carbon emissions. This has informed the development of a draft Schools' Climate Action Handbook, which includes information on energy and carbon reduction opportunities and potential retrofit funding paths. Successful pilot installation of energy monitoring software in one school to support user-energy and carbon reductions.

BU.2.05 Two retrofit coordinators

Ensure that Enfield always has two trained retrofit coordinators.

Progress updates

Overall progress



Comment

To be reviewed

Progress updates

Details

01/07/2022

The council currently works with external retrofit coordinators. The preferred approach for working with Retrofit Coordinators will be reviewed for Climate Action Plan full review to assess benefits against investment requirement.

01/07/2021

A member of staff is being trained to be a Retrofit Coordinator, with opportunities for securing additional resources being considered.

BU.2.06 Higher EPC/SAP targets for private rented property

Investigate whether Enfield can set higher EPC/SAP targets for private rented property.

Progress updates

Overall progress



Comment

On track

Progress updates

Details

09/09/2022

As of September 2022, there are 483 properties that are registered as having an EPC rating of F and G, resulting in the energy efficiency rating being improved in 35% of properties that had an F and G EPC rating.

Through the introduction of the licensing schemes, engaging with landlord and raising awareness we continue to work with landlords and agents to improve property conditions and meet the MEES statutory energy efficiency standards.

01/07/2021

The Council's landlord licensing scheme has been launched which includes requiring minimum SAP levels for properties.

BU.2.07 Research retrofit approaches

Research the impact of different low carbon retrofit approaches (e.g. EnergieSprong) to understand which is the most suitable for the minimum SAP of 86.

Progress updates

Overall progress



Comment

On track

Progress updates

Details

01/07/2022

The Council is delivering a range of retrofit measures across council homes which includes piloting the delivering of ten deep retrofit projects with EnergieSprong through the Social Housing Development Fund (SHDF).

01/07/2021

The Housing Asset Management and Sustainability Strategy includes an initial assessment of retrofit schemes including whole-house and EnergieSprong. The London Retrofit Programme will also consider what is required to bring all properties up to an average of EPC B.

BU.2.08 Retrofit council housing

Retrofit council housing to increase SAP to minimum score of 86

Progress updates

Overall progress



Comment

In progress

Progress updates

Details

01/07/2022

The Council Housing Asset Management Strategy is looking to adopt an EPC/SAP target in alignment with the London Retrofit Target of EPC B average. The current average SAP score is 71.9.

01/07/2021

The Housing Asset Management and Sustainability Strategy includes an initial assessment of retrofit schemes including whole-house and EnergieSprong. The London Retrofit Programme will also consider what is required to bring all properties up to an average of EPC B.

BU.3.01 BREEAM 'Outstanding' non-domestic developments

Ensure that all non-domestic developments are built to BREEAM Outstanding.

Progress updates

Overall progress



Comment

In progress

Progress updates

Details

01/07/2022

The current Enfield Development Management Document requires a minimum of BREEAM 'Excellent', with a move towards 'Outstanding'. This is being enforced through the planning process. A dedicated officer within the Climate Action and Sustainability Team has been appointed to support the planning team in enforcing net zero policies and pushing for the highest standard of performance.

01/07/2021

This is an ongoing requirement that is secured via the planning process.

BU.3.02 Enforce New London Plan standards

Enforce the standards set out in the New London Plan.

Progress updates

Overall progress



Comment

On track

Progress updates

Details

As set out in action BU.1.4 for homes, all new non-domestic developments are required to meet the net zero requirements as set out in the London Plan 2021 and supplementary guidance, being enforced through the planning process. A dedicated officer within the Climate Action and Sustainability Team has been appointed to support the planning team in enforcing net zero policies and pushing for the highest standard of performance. Fabric efficiency, as the first stage of the Energy Hierarchy is encouraged, with carbon offsetting as the last option after on-site reduction have been maximised.

In-house training has been delivered to the Planning team and is scheduled to have continued training sessions and updates.

The Climate Action and Sustainability Team has adopted a New Development Carbon Compensation Fund (NDCCF), reviewing the role of the previous carbon offset fund. The price of carbon is under review as part of the Local Plan update to incentivise on-site reduction and reflect the true price of offset.

01/07/2022

01/07/2021

This is an ongoing requirement that is secured via the planning process.

I Indicators

BU3 # Average EPC (SAP) score of council managed homes

adopted shared indicator

OUTCOME REVISED - Own council housing stock will have an minimum SAP of 86 (Energy Performance Certificate B).

Progress updates

Overall progress



Comment

In progress

Monitoring

Target date	Target value	Benchmark	Unit
31/12/2030	86	71.9	Average SAP
Date	Value		
31/03/2022	71.9		
31/03/2022	71.9		

BU1 # homes connected to heat network

adopted shared indicator

Total number of homes connected to the Energetik network at the end of the year.

Progress updates

Overall progress



Comment

On track

Monitoring

Target date	Target value	Benchmark	Unit
-------------	--------------	-----------	------

31/03/2030	8000	#
Date	Value	
31/03/2022	743	
31/03/2021	615	

BU5/6 (Not reported) % new builds with Post-Occ report adopted shared indicator

% new builds with post occupancy survey

INDICATOR NOT REPORTED - UNDER REVIEW

Monitoring

Target date	Target value	Benchmark	Unit
18/07/2022			%

BU7 (Not reported) # housing associations engaged adopted shared indicator

housing associations engaged on climate change

INDICATOR NOT REPORTED - UNDER REVIEW

BU2 (Not reported) % council homes with EPC adopted shared indicator

% council homes with a current EPC

INDICATOR NOT REPORTED - UNDER REVIEW

Progress updates

Overall progress **Comment**



BU8 (Not reported) % BREEAM Outstanding new builds adopted shared indicator

INDICATOR NOT REPORTED - UNDER REVIEW

Progress updates

Overall progress **Comment**



BU4 # private rented properties improved to meet minimum standards adopted shared indicator

OUTCOME REVISED # Number of private rented properties that have an EPC rating of F or G.

Progress updates

Overall progress **Comment**



Monitoring

Target date	Target value	Benchmark	Unit
31/12/2040	0	1372	#

Date	Value
01/09/2022	483
31/03/2021	1242



4 Waste

Outcomes

WA Circular economy adopted adopted shared outcome

WA.1 Decreased waste & increased recycling

WA.2 Reduced single use plastics

A Actions

WA.1.01 Waste strategy for flatted properties

Create a waste strategy for flatted properties to expand and improve recycling and food composting, adopting the good practices and recommendations from the Resource London Flats Recycling Project

Progress updates

Overall progress	Comment
	In progress

Progress updates

Details
<p>The council is developing a response to upcoming legislation regarding recycling in flatted developments from 23/24.</p> <p>An updated Recycle and Waste Management Guidance document is being outlined for developers of new buildings and for retrofitting to facilitate recycling in flats by design.</p>
23/08/2022

01/07/2021	This has not been progressed because the service has been focused on dealing with the challenge of Covid-19 including additional waste and recycling being presented for collection.
------------	--

WA.1.02 Local food production

Identify initiatives to increase local food production and opportunities for using land for growing food, starting with Council owned land

Progress updates

Overall progress	Comment
	In progress

Progress updates

Details
A council working group and met with an external entrepreneur offering small scale food production proposals in Enfield. Two options were favoured by the group and are under consideration for further development.
01/07/2022

01/07/2021

The Council already provides allotments and community growing spaces, as well as owning agricultural land in the north of the borough. In addition, the Blue and Green Strategy includes an ambition to increase food production.

WA.1.03 Construction waste targets

Develop construction waste targets

Progress updates

Overall progress



Comment

On track

Progress updates

Details

The London Plan 2021 Policy S17 and Circular Economy Guidance indicates a 95% reuse/recycling/recovery of construction and demolition waste, required to be reported against for all referable developments. The new Local Plan also proposes adoption principles of circular economy.

The council has adopted the principles of the Circular Economy Guidance to be net zero waste for all Council Housing developments.

01/07/2022

The Meridian Water development is targets 95% of non-hazardous waste is re-used or recycled, and a volume per contract spend requirement given. "

01/07/2021

The London Plan has policies in relation to construction waste and the Meridian Water Environmental Sustainability Strategy considers how it can be minimised.

WA.1.04 Waste management in schools

Work with schools to help decrease waste and increase recycling and food composting.

Progress updates

Overall progress



Comment

In progress

Progress updates

Details

An offer for commercial collection of (dry) recycling for schools was developed, with pilots to be rolled out in 22/23.

The council continues to offer educational assemblies/class to primary schools on request.

01/07/2022

01/07/2021

The emerging schools' climate action handbook includes information on recycling and waste.

WA.1.05 Educate staff on recycling

Intensify the campaign to educate all staff on recycling, to increase our corporate recycling rates and introduce circular economy principles.

Progress updates

Overall progress

Comment



Behind target

Progress updates

Details

01/07/2022

Recycling is collected in Council buildings, as part of pilot for commercial collection in the borough. General waste and recycling bins are distributed side-by-side around Council buildings with clear explanation on what is collected to avoid contamination. Next steps as reported on in CO.1.2.

A Circular Economy training was organised for May 2022 in collaboration with ReLondon for Council staff.

The new Sustainable and Ethical Procurement Policy also introduces circular economy principles. "

WA.1.05 Waste management in council

Overhaul and improve the Council's own recycling and waste sorting and collection from council buildings

Progress updates

Overall progress

Comment



In progress

Progress updates

Details

01/07/2022

Recycling is collected in Council buildings, as part of pilot for commercial collection in the borough. General waste and recycling bins are distributed side-by-side around Council buildings with clear explanation on what is collected to avoid contamination. Next steps as reported on in CO.1.2.

A Circular Economy training was organised for May 2022 in collaboration with ReLondon for Council staff.

The new Sustainable and Ethical Procurement Policy also introduces circular economy principles.

01/07/2021

With Covid-19 leading to significant operational challenges and lower numbers of staff onsite this has not been progressed.

WA.2.01 Waste reduction campaigns

Support the NLWA on all waste reduction campaigns, including low plastic zones initiative which encourages businesses to reduce the use of excessive and unnecessary plastic.

Progress updates

Overall progress

Comment



To be reviewed

Progress updates

Details

23/08/2022

The NLWA are currently reviewing the scope of the existing Low Plastic Zone scheme, to review opportunities for improvement. The council will continue to support NLWA campaigns.

01/07/2021

This is part of ongoing NLWA work, including low plastic zones, which the Council supports.

WA.2.02 Expand Refill Enfield

Expand Refill Enfield, whereby businesses are encouraged to offer free tap water, to prevent the need to purchase single use plastic bottles.

Progress updates

Overall progress



Comment

In progress

Progress updates

Details

01/07/2022

Refill London is an ongoing national campaign supported by the Mayor. There are a number of Enfield businesses signed up to the current programme. Opportunity for scheme to be further promoted within the borough to increase usage.

01/07/2021

This has not been progressed because of Covid-19 related restrictions.

WA.2.03 Residents circular economy campaign

Run a campaign with residents to promote circular economy principles, increase recycling rates and reduce food waste within the home, reducing unnecessary packaging.

Progress updates

Overall progress



Comment

In progress

Progress updates

Details

01/07/2022

There is an ongoing residents comms campaign around waste and recycling. 2022/23 campaign "Things for Bins" to be launched.

01/07/2021

A recent media campaign by the Council encouraged people to follow circular economy principles including reuse and recycling.

WA.2.04 Circular economy within procurement

Identify where circular economy principles can be included in Enfield's procurement policies and processes and develop ways of measuring progress.

Progress updates

Overall progress



Comment

On track

Progress updates

Details

01/07/2022

The recently adopted Sustainable and Ethical Procurement Policy (2022) introduces the principles of Circular Economy and sets a 3-tier approach to supplier waste management and recycling.

01/07/2021

Development has started on a new Sustainable and Ethical Procurement policy.



Indicators

WA1/NI192 % household waste sent for reuse, recycling and composting

adopted shared indicator

% household waste sent for reuse, recycling and composting

Progress updates

Overall progress

Comment



Behind target

Monitoring

Target date	Target value	Benchmark	Unit
31/12/2022	49	36	%
Date	Value		
31/03/2022	30.9		
31/03/2021	33.2		
31/03/2020	33.0		

WA2/NI191 kg/hh Household Waste Collected

adopted shared indicator

Total annual household residual waste collected per household

Progress updates

Overall progress

Comment

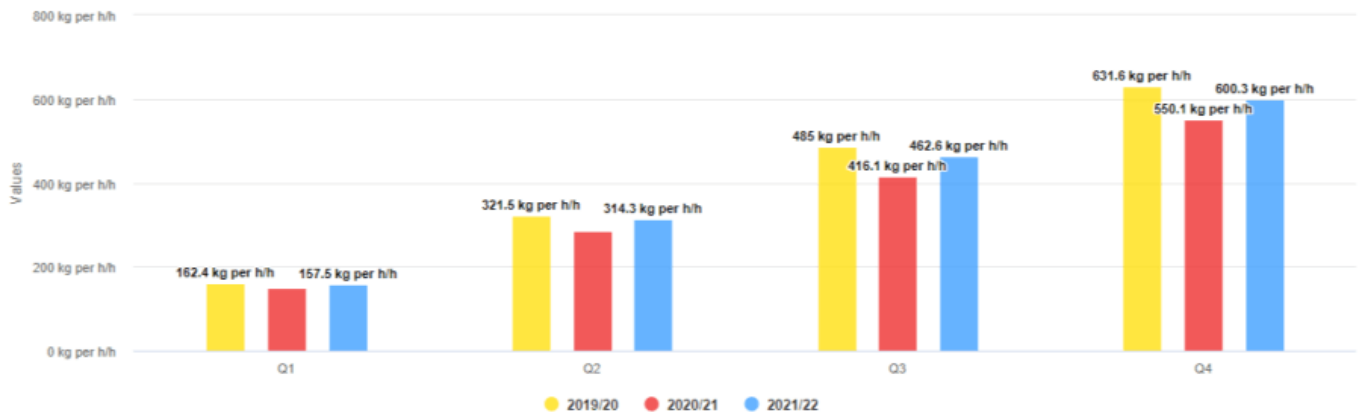


Action need

Monitoring

Target date	Target value	Benchmark	Unit
31/05/2022	412	605	kg/hh
Date	Value		
31/03/2021	600.3		
31/03/2021	550.1		
31/03/2020	631.6		

Household Waste Collected (Kg per Household)



Household Waste Collected

August 18, 2022



5 Energy

Outcomes

EN.1 Access to zero/low carbon energy & heat

Actions

EN.1.01 Continue Energetik investment

Continue to invest in Energetik with more homes connected each year.

Progress updates

Overall progress



Comment

On track

Progress updates

Details

01/07/2022

Energetik connection number as of August 2022 is over 850 connections.

01/07/2021

Energetik's connection numbers as at 31 March 2021 – a total of 615 connections – were one year ahead of schedule.

EN.1.02 Energy strategy

Develop a 10-year energy strategy to deal with anticipated changes in energy markets over the next decade.

Progress updates

Overall progress



Comment

On track

Progress updates

Details

01/07/2022

The Council are being supported by the GLA's LEA programme to develop the first borough-wide Local Area Energy Plan. This includes technical appraisal of changes to the borough-wide energy systems (heat, transport, power) are required to meet net-zero and a roadmap of actions to take. The project is due for completion in Autumn 2022.

01/07/2021

The scope, vision and outcomes of a local energy plan have been developed. This outlines an energy masterplan which sets out future requirements and the approach to meeting these.

EN.1.03 Review council's land ownership

Review the council's land ownership and identify viable renewable energy generation options, prioritising wind and solar.

Progress updates

Overall progress**Comment**

Behind target

Progress updates**Details**

01/07/2022

Priority has been to progress the borough-wide Local Area Energy Plan (LAEP) which looks at viable renewable energy across the borough. Action will be reviewed in the CAP full review incorporating findings from the LAEP.

01/07/2021

This has been identified as an opportunity in the scope for the local energy plan.

**Indicators**

EN1 (Not reported) % renewable energy

adopted shared indicator

% Renewable energy generation on council owned land

INDICATOR NOT REPORTED - UNDER REVIEW

Progress updates**Overall progress****Comment**



6 Natural Environment

Outcomes

NA.1 Increase blue green infrastructure across the borough

adopted shared outcome

25% net increase in blue-green infrastructure

Actions

NA.1.01 Green infrastructure planting programme

Develop a green infrastructure planting programme across urban areas, increasing the number of trees and other greenery, particularly where this is currently lacking.

Progress updates

Overall progress

Comment



On track

Progress updates

Details

01/07/2022

In June 2021 Enfield's Blue and Green Strategy was adopted outlining objectives and targets to be delivered.

01/07/2021

There was a net increase in the number of street trees planted in 2020/21. In addition, the development of the Blue and Green Strategy will provide a framework for delivery of the longer term action.

NA.1.02 Plant 100,000 trees

Plant 100,000 new trees through Enfield Chase woodland creation in the north of the borough.

Progress updates

Overall progress

Comment



On track

Progress updates

Details

01/07/2022

The number of new trees planted since 2020 has reached 100,000.

01/07/2021

Despite the impacts of Covid-19, the planting of the first 50,000 trees as part of the Enfield Chase Restoration Project was successfully completed.

NA.1.03 Tree planting & woodland creation programme

Deliver a 10-year tree planting and woodland creation programme in the north of the borough to further increase the amount of woodland from the initial 100,000 new trees.

Progress updates

Overall progress**Comment**

On track

Progress updates**Details**

01/07/2022

The number of new trees planted since 2020 has reached 100,000 and created 60 hectares of woodland.

01/07/2021

Despite the impacts of Covid-19, the planting of the first 50,000 trees as part of the Enfield Chase Restoration Project was successfully completed.

NA.1.04 Develop wetland capacity

Continue to develop wetland capacity to increase flood resilience.

Progress updates
Overall progress**Comment**

On track

Progress updates**Details**

01/07/2022

Since 2019, Enfield has delivered Broomfield Park Wetlands and Albany Park River Restoration project which involved the construction of wetlands. In addition, close to 40 Rural SuDS in the upper catchment of the Salmons Brook were constructed.

01/07/2021

Despite the impact of Covid-19 on funding and project delivery, work continued on wetland schemes including at Albany Park.

NA.1.05 MW blue green infrastructure

Integrate blue green infrastructure features such as rain gardens and trees into the Meridian Water development and naturalise pymmes Brook

Progress updates
Overall progress**Comment**

In progress

Progress updates**Details**

01/07/2022

This has been integrated into the approved Planning application and the detail of the Strategic Infrastructure Works that are due to start early 2023. The Meridian Water Environmental Sustainability Strategy includes Biodiversity Net Gain and Open area percentage targets. Meridian Water team is working closely with the Green / Blue infrastructure team.

01/07/2021

The first elements of infrastructure will be delivered as part of the Strategic Infrastructure Works which are due to start on site late 2021.



NA2 # of hectares of woodland

adopted shared indicator

New hectares of woodland established after 2019 (baseline year)

Progress updates

Overall progress



Comment

On track

Progress updates

Details

31/03/2021

The first phase of the Enfield Chase Restoration Project was completed. The total number of hectares planted will be assessed once the second phase is completed in winter 2020.

Monitoring

Target date

Target value

Benchmark

Unit

31/03/2022

60

0

hectares

NA3 # trees planted

adopted shared indicator

Number of new trees planted after 2019 (baseline year)

Progress updates

Overall progress



Comment

On track

Monitoring

Target date

Target value

Benchmark

Unit

31/03/2022

10000

0

#

Date

Value

31/03/2022

10000

31/03/2021

5000

NA4 # new wetland sites

adopted shared indicator

Number of schemes completed after 2019 (baseline year)

Progress updates

Overall progress



Comment

Target exceeded

Progress updates

Details

31/03/2021

More than 2 schemes were completed so performance is ahead of the target of 2 per year.

Monitoring

Target date	Target value	Benchmark	Unit
31/12/2020	12	0	#
Date	Value		
31/03/2022	42		
31/03/2021	3		

NA1 Residual emissions from Council Operations (to be offset)

adopted shared indicator

Difference between Council's total Scope 1 and 2 baseline emissions and actual emissions, to be offset from 2030

Progress updates

Overall progress

Comment



In progress

Monitoring

Target date	Target value	Benchmark	Unit
31/12/2022	49	36	%



7 Influencing Others

Outcomes

IN Net zero community

Residents, businesses and local partners committed to net zero by 2030

IN.1 Residents adopt zero carbon lifestyles

Influence residents to adopt zero carbon lifestyles and take low carbon decisions

IN.2 Key partners, suppliers and economy transitioned to low or zero carbon

Influence the behaviour of Enfield's key partners, suppliers and the wider economy to transition to low or zero carbon

OV.2 Carbon neutral borough by 2040

adopted shared outcome

Actions

IN.1.01 Engage Enfield households on sustainability

Use established council and community communication channels to engage with households across Enfield on: Energy efficiency, Renewable energy installation, Low carbon refurbishment, Low carbon consumption choices and how to reduce waste, Low carbon travel, adapting to climate change.

Progress updates

Overall progress

Comment



On track

Progress updates

Details

01/07/2022

A Climate Action focussed comms campaign was delivered in 21/22 which included messaging around energy efficiency, renewable energy healthy streets and recycling.

01/07/2021

Significant progress has been made with a recycling and waste campaign, launch of the next tranche of Solar Together and ongoing promotion of active travel including around the London Streetspace initiatives.

IN.1.02 Prioritise retrofit for fuel-poor households

Identify fuel-poor households in the private rented sector and in owner-occupied homes to prioritise support for low carbon retrofit using a mixture of EPC data and information from across Enfield services.

Progress updates

Overall progress

Comment



In progress

Progress updates

Details

Fuel poverty advice and access to available funding was continued to be offered by HEET, jointly with Waltham Forest, and London-wide through Shine.

01/07/2022

The Council has supported the utilisation of LAD funding for eligible homes working with Housing Gateway. The council is continuing to engage with future opportunities of fuel-poverty related funding.

01/07/2021

Households have been targeted for Green Homes Grant with the joint Enfield / Waltham Forest HEET initiative offering advice and support.

IN.1.03 Identify retrofit options

Use the Coalition of Energy Efficiency in Buildings (CEEB) to identify options for zero carbon retrofit across all tenures.

Progress updates

Overall progress

Comment



On track

Progress updates

Details

01/07/2022

The council continue to be members of CEEB and engage with opportunities per BU.2.1.

01/07/2021

The Council has joined CEEB and is engaged with related areas of work including Green Rental Agreements.

IN.1.04 Use 'green doctors'

Establish feasibility of using 'green doctors' to engage specific households on energy switching and efficiency.

Progress updates

Overall progress

Comment



To be reviewed

Progress updates

Details

01/07/2022

Action has not been progressed and will be reviewed in CAP 22 full update to assess impact against investment requirement.

01/07/2021

Household engagement has been limited due to Covid-19.

IN.1.05 Effective climate change messaging to residents

Identify the effective ways of actively engaging residents across Enfield with targeted messages relating to climate change, through home visits, phone calls and third party visits.

Progress updates

Overall progress

Comment



To be reviewed

Progress updates

Details

01/09/2022 Action has not been progressed and will be reviewed in CAP 22 full update to assess impact against investment requirement.

01/07/2021 Household engagement has been limited due to Covid-19.

IN.2.01 Work with partners on adaptation in health & social care

Work with our partners to raise the importance of adaptation and mitigation to protect residents from extreme weather.

Progress updates

Overall progress

Comment



To be progressed

Progress updates

Details

01/07/2022 Action has not been progressed and will be reviewed in CAP 22 full update.

01/07/2021 Whilst this year the priority has been on supporting vulnerable residents through the Covid pandemic, the People Directorate has implemented and will continue to seek to expand initiatives such as remote working for staff, active lifestyles through initiatives such as Making Every Contact Count training and reduced unhealthy food consumption, and tobacco use.

IN.2.02 Vegetarian/vegan catering at Council events

All events held by Enfield Council where catering is provided to offer only vegan or vegetarian options.

Progress updates

Overall progress

Comment



To be reviewed

Progress updates

Details

01/07/2022 This action is under review, noting very limited catering is provided for council events. The priority is to ensure all food is sustainably procured, with least impact to environment. Whilst this action is under assessment as part of the Climate Action Plan Rev.2.0, locally sourced and vegan/vegetarian options will continue to be offered through all council catering to encourage more sustainable food choices.

01/07/2021 Council onsite catering has been heavily impacted by Covid-19.

IN.2.03 Hold schools climate summit

Encourage and support schools in their work to cut carbon and raise the importance of adaptation and mitigation, including by holding a school climate summit at the earliest opportunity.

Progress updates

Overall progress

Comment



In progress

Progress updates**Details**

01/07/2022

The Schools Climate Action Network meet termly, topics have included energy, recycling, sustainable travel, tree planting and flood resilience. The council have continued supported schools in tree planting and flood resilience projects, and secured grant funding for the installation of solar panels and low carbon heating systems.

01/07/2021

The emerging schools climate action handbook includes a range of information including on recycling and waste. The first School's Climate Action Network meeting has taken place.

IN.2.04 Support SMEs with regional partner LAs

Work with regional partner local authorities to support small and medium businesses (SMEs) to address barriers to becoming more energy efficient and reducing their carbon footprint.

Progress updates**Overall progress****Comment**

To be progressed

Progress updates**Details**

01/07/2022

Funding was secured through the Net Zero Innovation Programme to work with UCL looking at circular economy and carbon emissions of buildings in Industrial Areas, with focus on the Hastingwood Trading Estate. Findings will highlight opportunities to support businesses with carbon reduction and address barriers to inform CAP 22 update and review of action.

01/07/2021

The delivery of areas of work such as this has been severely restricted by the impacts of Covid-19.

IN.2.05 Borough wide CCP

Establish a borough wide climate change partnership (CCP), initially focused on the largest emitters across the borough.

Progress updates**Overall progress****Comment**

To be reviewed

Progress updates**Details**

01/07/2022

Action has not been progressed and will be reviewed in Climate Action Plan Rev.2.0.

01/07/2021

The delivery of areas of work such as this has been severely restricted by the impacts of Covid-19.

**Indicators****COA1 % Borough-wide emissions**

adopted shared indicator

Total borough wide energy use related carbon emissions

Progress updates

Overall progress



Comment

To be progressed

Progress updates

Details

31/03/2022

The data since setting a baseline from 2017 data (2019/20 reporting year) is showing an overall upwards trend in borough-wide emissions, 2% increase over the baseline. This is primarily being driven by an increase in road base emissions. Overall emissions associated with buildings has overall decreased, this is due to a 18% reduction in scope 2 emissions from electricity over the baseline, this can largely be attributed to decarbonisation of the electricity grid.

31/03/2021

2% reduction over baseline Borough-wide emissions have been realigned with best practice to ensure consistency, with 2020/21 reporting relating to 2018 data due to lag in provision by Government.

Monitoring

Target date	Target value	Benchmark	Unit
31/03/2040	323	1140	kt/CO2e
Date	Value		
31/03/2022	1073		
31/03/2021	1115		

IN2/3 (Not reported) % homes passively engaged

adopted shared indicator

Percentage of homes passively engaged on climate change mitigation, adaptation and sustainability (through communications campaign).

INDICATOR NOT REPORTED - UNDER REVIEW

Monitoring

Target date	Target value	Benchmark	Unit
01/09/2022			

IN1 (Not reported) % directly engaged

adopted shared indicator

% directly engaged through active measures

INDICATOR NOT REPORTED - UNDER REVIEW

IN4 (Not reported) # members in CCP

adopted shared indicator

of businesses signed up to a business climate change partnership.

INDICATOR NOT REPORTED - UNDER REVIEW

Progress updates

Overall progress

Comment



Monitoring

Target date

Target value

Benchmark

Unit

31/03/2025



8 Financing the Action

Outcomes

FI.1 Deliver strategy within budget

Actions

FI.1.01 Use grant & low-cost loan funding

Take advantage of grant and low-cost loan funding available to enable us to take the action required to become carbon neutral.

Progress updates

Overall progress	Comment
	On track

Progress updates	Details
------------------	---------

01/07/2022	The Council has been successful in securing significant funding for housing and corporate building retrofit. Priority is to secure revenue funding to enable forward planning, when opportunities are available.
------------	--

01/07/2021	The Council has been successful in securing significant funding for housing and corporate building retrofit.
------------	--

FI.1.02 Maximise funding for schools

Maximise funds such as the non-domestic renewable heat incentive to upgrade energy supply to the borough's schools.

Progress updates

Overall progress	Comment
	In progress

Progress updates	Details
------------------	---------

01/07/2022	The non-domestic renewable heat incentive closed on 31st March 2021. The Council is reviewing opportunities to secure grant and invest to save loan funding for schools as and when available.
------------	--

01/07/2021	This has been included in the School's Climate Action Handbook.
------------	---

FI.1.03 Identify costs associated with CAP delivery

Undertake exercise to identify costs associated with delivery of the CAP so that this can inform the Council's budget setting process and our ask of partners, in particular the Government.

Progress updates

Overall progress**Comment**

To be progressed

Progress updates**Details**

01/07/2022

This will be part of the full CAP 22 update.

01/07/2021

The focus to date has been on delivering existing programmes of work which deliver against the Council's carbon emissions targets, as well as securing immediate funding opportunities.

FI.1.04 Develop/test a price of carbon for decision making

Develop and test a price for carbon associated with the Council's decisions and activities. Use this to charge a levy against poor internal carbon performance, with income used to fund zero carbon investment to reduce carbon emissions from council buildings.

Progress updates

Overall progress**Comment**

In progress

Progress updates**Details**

01/07/2022

See previous item CO.3.1 regarding Carbon Price. A feasibility study for Corporate Carbon Fund is proposed for 22/23, which will suggest a carbon price for funding offset schemes locally. The intention is for Feasibility Study to provide all the information needed for a business case proposal for Council Cabinet to review.

01/07/2021

Background work has been undertaken to look at options for developing a carbon price.

FI.1.05 Maximise COF for projects

Maximise the Carbon Offset Fund to provide capital to invest in housing retrofit and renewable energy projects.

Progress updates

Overall progress**Comment**

On track

Progress updates**Details**

01/07/2022

New internal guidance has been developed and adopted outlining the approach to the New Development Carbon Copensation Fund (NDCCF), previously Carbon Offset Fund to provide overarching guidance for assessment and prioritisation of projects. The fund has been utilised for projects including energy monitoring in schools and retrofit pilots of existing homes.

The cost of carbon is under review as part of development of the revised Local Plan.

01/07/2021

There have been increasing levels of receipts into the Carbon Offset Fund (COF) and a significant project has been identified which it could support.